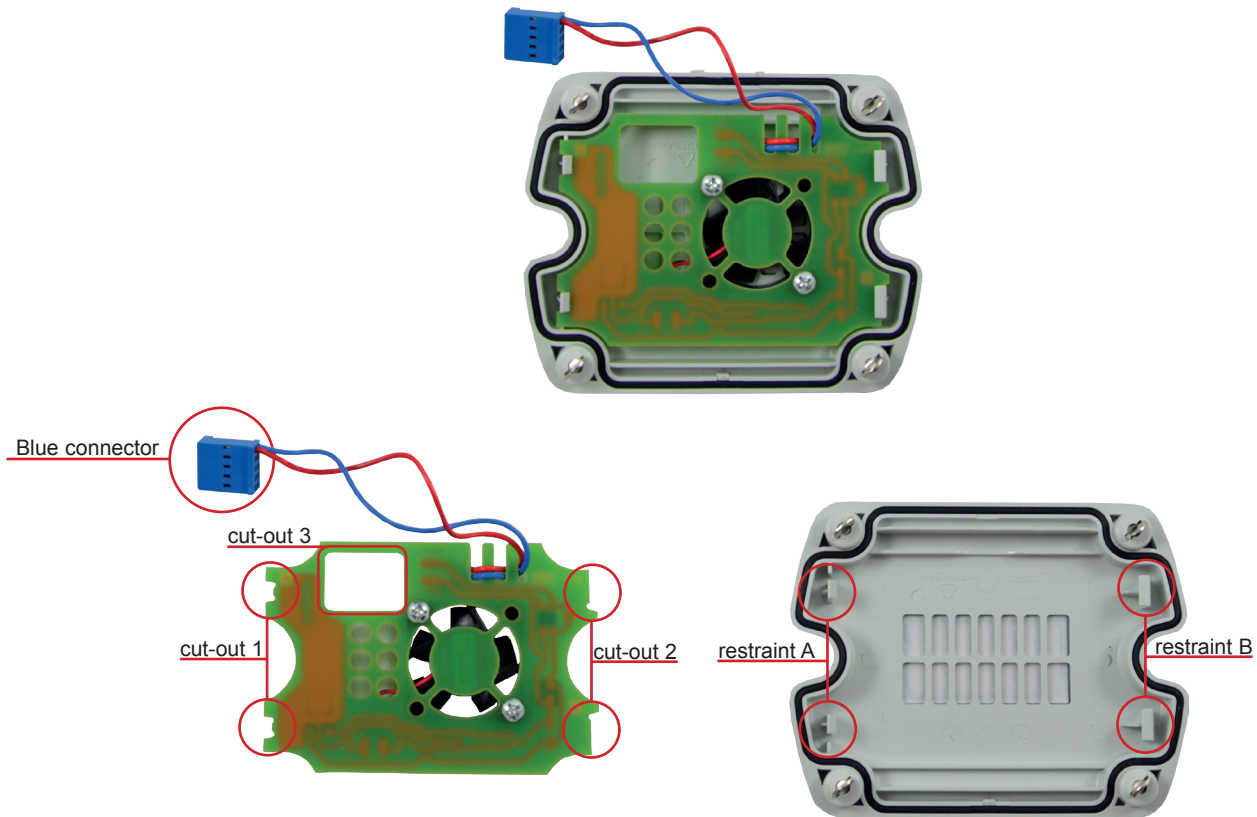


QUICK GUIDE

EE820-FAC - Forced Air Circulation Module



CAUTION

The EE820-FAC Forced Air Circulation Module is an ESD sensitive device and shall be handled at all times according to the general precautions for handling of ESD sensitive equipment .

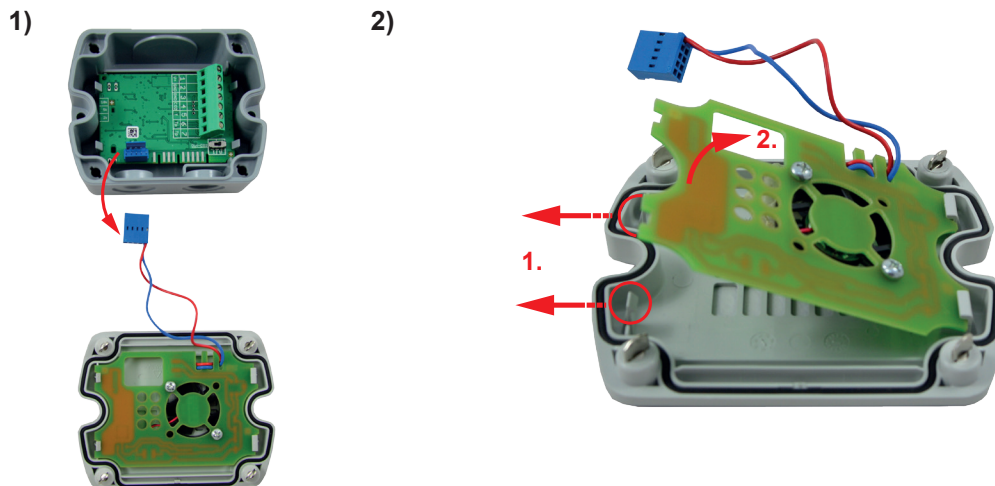
SCOPE OF SUPPLY

EE820 Cover is not included in the scope of supply and shall be ordered separately, type number: **EE820-COVER**

REPLACING

FOR REPLACING an existing EE820-FAC modul remove first the old EE820-FAC module:

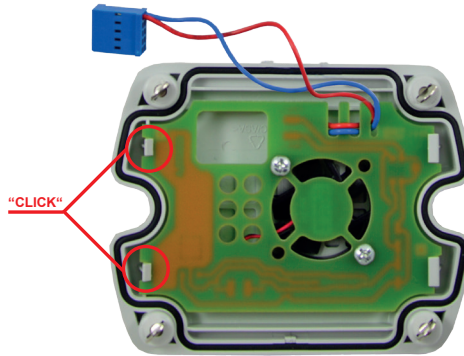
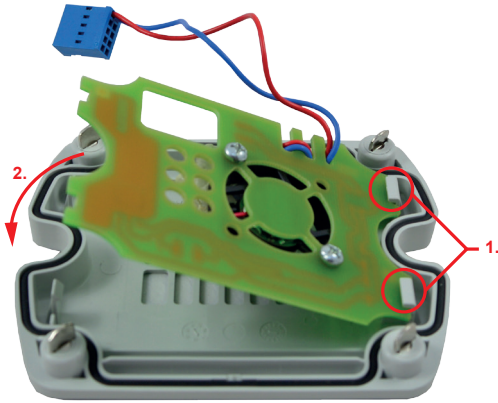
- 1) Disconnect the blue connector from the main EE820 board
- 2) Release the old EE820-FAC by acting on restraint A.



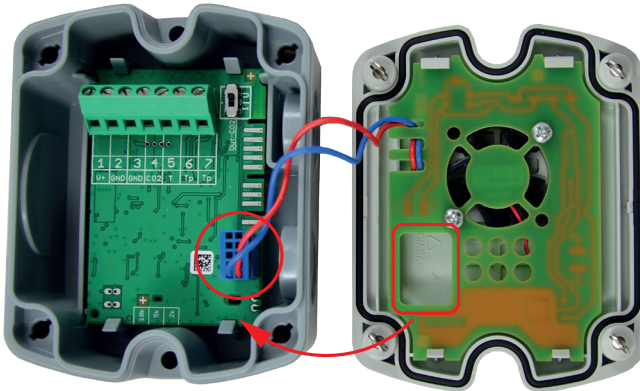
INSTALLING

For installing the new EE820-FAC:

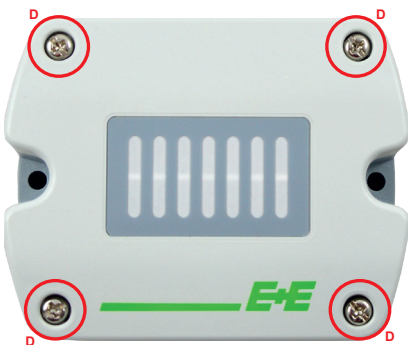
- 3) Observe the position of the A and B restraints in the cover and of the corresponding cut-outs 1 and 2 in the EE820-FAC board.
- 4) Insert first the EE820-FAC into the B restraints. Then press the EE820-FAC as in the picture, till in snaps into the A restraints.



- 5) Connect the blue connector of the EE820-FAC to the blue socket on the main EE820 board.
- 6) Place the cover on the EE820 so that the cut-out 3 matches the location of the blue connector.



- 7) Fix the cover with the 4 bayonett screws D.



INFORMATION

+43 7235 605 0 / info@epluse.com

E+E Elektronik Ges.m.b.H.
 Langwiesen 7 • A-4209 Engerwitzdorf
 Tel: +43 7235 605-0 • Fax: +43 7235 605-8
info@epluse.com • www.epluse.com

LG Linz Fn 165761 t • UID-Nr. ATU44043101
 Place of Jurisdiction: A-4020 Linz • DVR0962759

BA_EE820-FCA_QG // v1.0 // Technische Änderungen vorbehalten // 302732

